

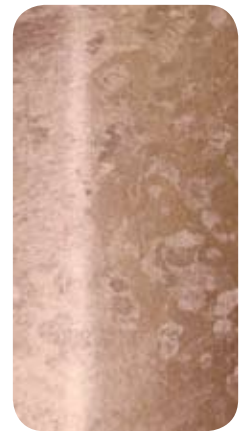


COMFORT CRAFT SONESTA SALON MATS

- The Comfort*Craft Sonesta series gives you the tailored look and feel of polyurethane with a unique designer surface and four sizes & colors to choose from.
- Sonesta adds color and flair to your salon with intricate yet understated neutral tones, with a slight metallic finish. It is drop dead gorgeous and will definitely fit any décor
- Comfort Craft mats are designed to provide the simplest and most effective way to reduce standing fatigue and stress by providing optimal balance between compression and resistance, absorbing and dispersing shock while providing the necessary support for stability.
- Sonesta has been developed with anti-bacterial and mildew resistance properties. 5:1 ratio of water to bleach solution may be used as a disinfectant. Sonesta meets State and Federal flammability requirements and contains no lead or other heavy metals. There are no VOCs or off gassing.
- Rhino Mats are known and respected worldwide for their superior performance and durability.
- The mission is simple – manufacture the world's best anti-fatigue mat and facilitate the salon professional's productivity through comfort.
- Comfort Craft Sonesta is a full 3/4" thick.



MINK



TOBACCO



SAPPHIRE



COAL

COMFORT CRAFT SONESTA Salon Mats				
Stock No.	Style	Size	Weight 3/4"	List
CCS2436	Shampoo	2' x 3'	6.0 lbs. ea.	\$150.00
CCS3660RECT	Rectangle	3' x 5'	19.0 lbs. ea.	\$322.00
CCS3660SC	Semi-Circle	3' x 5'	18.0 lbs. ea.	\$264.00
CCS35DH	Hexagon	3' x 5'	20.0 lbs. ea.	\$310.00
CCS34DH	Hexagon	4' x 5'	21.0 lbs. ea.	\$380.00
Colors: Tobacco, Mink, Coal, Sapphire. 3/4" Thick.				