

ANTI-FATIGUE



PINNACLE

THE ULTIMATE IN ANTI-FATIGUE FLOOR COVERING

"A NEW DIMENSION IN RESILIENT FLOORING"

PINNACLE combines the durability of commercial grade Berber carpet with an extra thick sponge base to create the most resilient multi-purpose anti-fatigue product, which is designed for use as a unique resilient floor covering or single area mat.

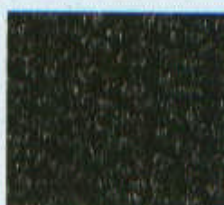
- 1" approximate overall thickness provides extremely good anti-fatigue characteristics.
- Heavy duty 1/2" thick Berber carpet is laminated to 1/2" sponge to create the ultimate in comfort.
- Attractive Berber surface aesthetically enhances areas where an upgraded designer look is desired.
- Extremely resilient to improve worker productivity.
- Available in standard pre-cut mats, or in special sizes as floor covering for use in larger work areas where workers benefit from unique anti-fatigue properties.
- Available with safety tapered bevel or square edge.
- High heel resistant.



Autumn



Sea Green



Charcoal

APPLICATIONS

Offices
Department Stores
Work Stations
Hotels
Health Clubs
etc.

Special Order Colors

Gray, Chocolate, Mustard, Natural, Blue, Hunter Green, Red, Burgundy

TYPE 1082 PINNACLE					Approx. 1" thick SO		
APPROX. SIZE	STYLE	EDGE FINISH	WT./LB.	STD PACK OR LIN. FT. PER RL	LIN. FT. PRICE	1-5 PRICE	6+ PRICE
3' x 5'	Mat	TAPERED EDGE	24	1	-	\$196.00 ea.	\$178.00 ea.
4' x 6'	Mat	TAPERED EDGE	39	1	-	\$14.00 ea.	\$285.00 ea.
39 1/2" w	Floor Covering	SQUARE EDGE*	5.5 lin. ft.	20'	\$39.00 lin. ft.	\$680.00 rl	\$656.00 rl
79" w	Floor Covering	SQUARE EDGE*	10.6 lin. ft.	20'	79.00 lin. ft.	1357.00 rl	1310.00 rl
158" w	Floor Covering	SQUARE EDGE*	21.2 lin. ft.	20'	158.00 lin. ft.	2713.00 rl	2618.00 rl

*Optional tapered edge may be added at no extra cost, please specify at time of ordering.

Note: Not for use in wet areas.