

# MARBLEIZED BEAUTY SALON™ Anti-fatigue Mats



## MARBLEIZED BEAUTY SALON MATS

- Rhino Marbleized provides excellent resistant to many hair care products. It is also very easy to clean - hair clippings do not want to stick to the low static formulation.
- Rhino Marbleized mattings are a superior value with puncture resistance that exceeds comparable rubber products by up to 90%.
- Marbleized is constructed of 3/32" heavy duty marbled vinyl tile surface, permanently bonded to your choice of a 3/8" or 3/4" resilient closed cell polymeric sponge base. Overall thickness is 1/2" or 7/8".

### MARBLEIZED TILE TOP BEAUTY SALON MATS

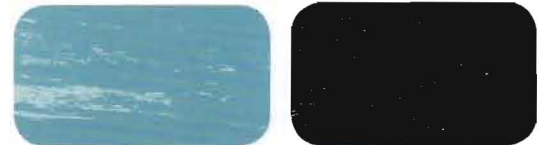
FOR 7/8" MATS, ADD "DS" TO STOCK NUMBER

Stock #	Style	Size	Weight 1/2"	Weight 7/8"
TT-2436	Shampoo Mat	2' x 3'	7.5 lbs. ea.	9.0 lbs. ea.
BTT-3642R	Rectangle	3' x 3.5'	13.0 lbs. ea.	15.7 lbs. ea.
BTT-3642S	Semi-Circle	3' x 3.5'	12.5 lbs. ea.	14.5 lbs. ea.
BTT-3648R	Rectangle	3' x 4'	15.0 lbs. ea.	18.0 lbs. ea.
BTT-3648S	Semi-Circle	3' x 4'	14.5 lbs. ea.	17.0 lbs. ea.
BTT-3654R	Rectangle	3' x 4.5'	16.8 lbs. ea.	20.0 lbs. ea.
BTT-3654S	Semi-Circle	3' x 4.5'	15.5 lbs. ea.	19.0 lbs. ea.
BTT-3660R	Rectangle	3' x 5'	17.0 lbs. ea.	22.0 lbs. ea.
BTT-3660S	Semi-Circle	3' x 5'	16.0 lbs. ea.	21.0 lbs. ea.
BTT-4860R	Rectangle	4' x 5'	23.0 lbs. ea.	29.0 lbs. ea.
BTT-4860S	Semi-Circle	4' x 5'	22.0 lbs. ea.	28.0 lbs. ea.
BTT-6060R	Rectangle	*5' x 5'	29.0 lbs. ea.	37.0 lbs. ea.
BTT-6060S	Semi-Circle	*5' x 5'	28.0 lbs. ea.	36.0 lbs. ea.

### CUSTOM SIZES - AVAILABLE IN LENGTHS UP TO 75 LIN. FT.

Stock #	Style	Weight 1/2"	Weight 7/8"
BTTR-36	36" W w/cut outs	3.5 lbs./Ln. Ft.	4.4 lbs./Ln. Ft.
BTTR-48	48" W w/cut outs	4.6 lbs./Ln. Ft.	5.8 lbs./Ln. Ft.
BTTR-60	*60" W w/cut outs	7.0 lbs./Ln. Ft.	7.5 lbs./Ln. Ft.

**Colors:** Brown, Gray, Tan, Charcoal, Sandalwood, Blue, Black/White, Solid Black. 7/8" Thick/Double Sponge (DS) \*60" Solid Black only.



Blue

Solid Black



Brown

Black/White



Tan

Gray



Charcoal

Sandalwood

**CWF Flooring, Inc.**  
[www.CartwheelFactory.Com](http://www.CartwheelFactory.Com)