

AcoustiCORK™ PR 60

Wave Textured Sound Control Underlayment

INSTALLATION INSTRUCTIONS Glued Down Hardwood Flooring on a Concrete Slab Subfloor

The following installation instructions are a recommendation, but are not intended as a definitive project specification. They are presented in an attempt to be used with recommended installation procedures as published by the National Oak Flooring Manufacturers Association (NOFMA) and the National Wood Flooring Association (NWFA).

SUBFLOOR

1. All subfloor work should be in accordance with the recommended procedures as published by NOFMA and the NWFA.
2. Concrete subfloor should be level, properly sloped and structurally sound.
3. Inspect concrete subfloor for any open cracks and fill with a high-grade epoxy filler.
4. Remove any excess concrete lumps or residue that may interfere with the installation of the AcoustiCORK PR60 underlayment.

TESTING FOR MOISTURE

1. Test the subfloor for excessive moisture prior to the installation of the AcoustiCORK PR60.
2. If excessive moisture is present (normally >3 lbs. per 1000 s/f in 24hrs with a Calcium Chloride test) in the subfloor, corrective action must be taken. Consult the project architect, flooring manufacturer and/or the most recent NOFMA & NWFA Installation Manuals for methods and materials for dealing with excessive subfloor moisture.

PERIMETER ISOLATION STRIP

1. Install the precut 3/4" wide, 6mm thick perimeter isolation barrier vertically around the perimeter of the entire floor including any openings or protrusions such as electrical boxes, heating ducts, cold air returns, columns or pipes in the subfloor installation. The perimeter isolation strip **MUST be installed prior** to AcoustiCORK PR60 underlayment being installed.
2. Remove the release liner from the self-adhesive backing and place flat against the wall, flush to the floor.
3. After positioning, press the isolation barrier firmly into place at all wall and vertical partitions surrounding the perimeter using the AcoustiCORK underlayment material.

4. Never mechanically fasten the isolation barrier, as this will severely diminish the acoustical performance of the sound rated floor system.
5. After the finished floor is installed the perimeter isolation barrier should be trimmed flush with the surface of the finished floor.

ACOUSTICORK PR 60 UNDERLAYMENT for GLUED DOWN HARDWOOD FLOORS

1. Cut the 6mm AcoustiCORK PR60 material to the desired length and position the material in the space to be covered, **with the waved textured surface facing down**.
2. Butt the AcoustiCORK PR60 material against the perimeter isolation barrier already installed at the floor/wall junction.
3. Pull the loose laid material back at least half the length of the cut material. Using a properly sized U or V-notched trowel (minimum 1/8") apply either a Urethane based adhesive, or the same type of wood flooring adhesive that will be used to bond the finished wood flooring to the AcoustiCORK PR60 to the concrete subfloor. **Place the AcoustiCORK PR60 underlayment with the "wave" side down into the bed of adhesive applied.** Repeat the process for the other half of the sheet, rolling in both directions with a 100# floor roller.
4. Proceed to cover the entire room, making sure the sheets are tightly butted together, without gaps. Rolling the floor area in both directions using a 100# roller. **Never mechanically fasten the sheets to the subfloor, as this will severely diminish the acoustical value of the product.**
6. After completion, the AcoustiCORK PR60 underlayment should cover the entire floor area without gaps and be securely bonded with the joints tightly butted.

GLUED DOWN WOOD FLOORING

1. Follow the manufacturers recommended instructions for installing the finished floor, using the adhesive and trowel size specified.
2. If a baseboard or shoe molding detail is required, leave a minimum 1/8" gap between the finished floor and the bottom of the shoe or baseboard. This gap must be filled with a non-hardening, color matching, paintable or clear Acoustical Grade Sealant.

AcoustiCORK™ PRODUCTS

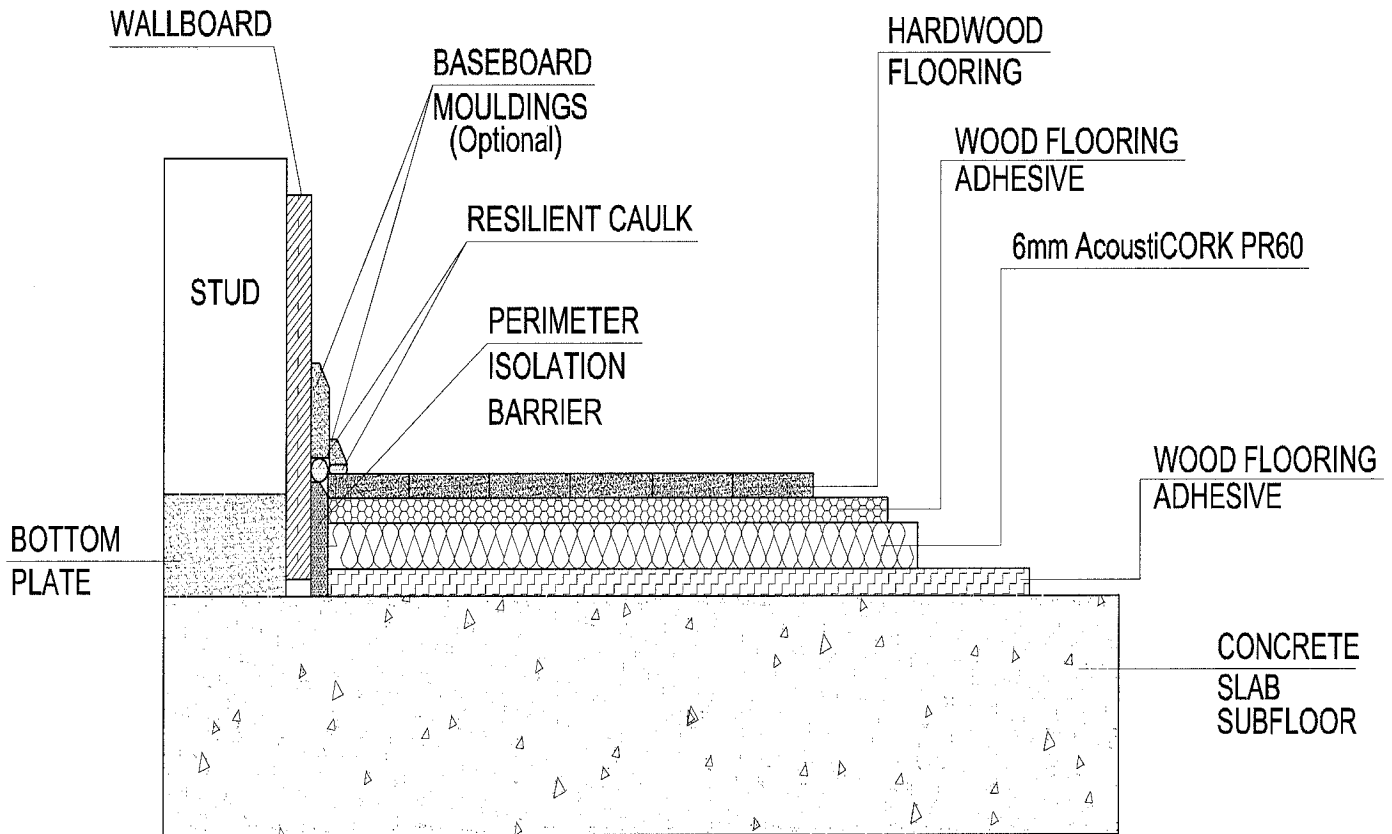
Sound Control Underlayment & Crack Suppression Membrane

26112 110th Street • PO Box 25 • Trevor, WI 53179 • 1-800-255-2675 • 1-262-862-2311 • FAX 1-262-862-2500 Visit our Website at www.acousticorkusa.com for the most complete information on AcoustiCORK™

AcoustiCORK™ PR 60

Wave Textured Sound Control Underlayment

INSTALLATION INSTRUCTIONS Glued Down Hardwood Flooring on a Concrete Slab Subfloor



AcoustiCORK™ PRODUCTS

Sound Control Underlayment & Crack Suppression Membrane

26112 110th Street • PO Box 25 • Trevor, WI 53179 • 1-800-255-2675 • 1-262-862-2311 • FAX 1-262-862-2500

Visit our Website at www.acousticorkusa.com for the most complete information on AcoustiCORK™